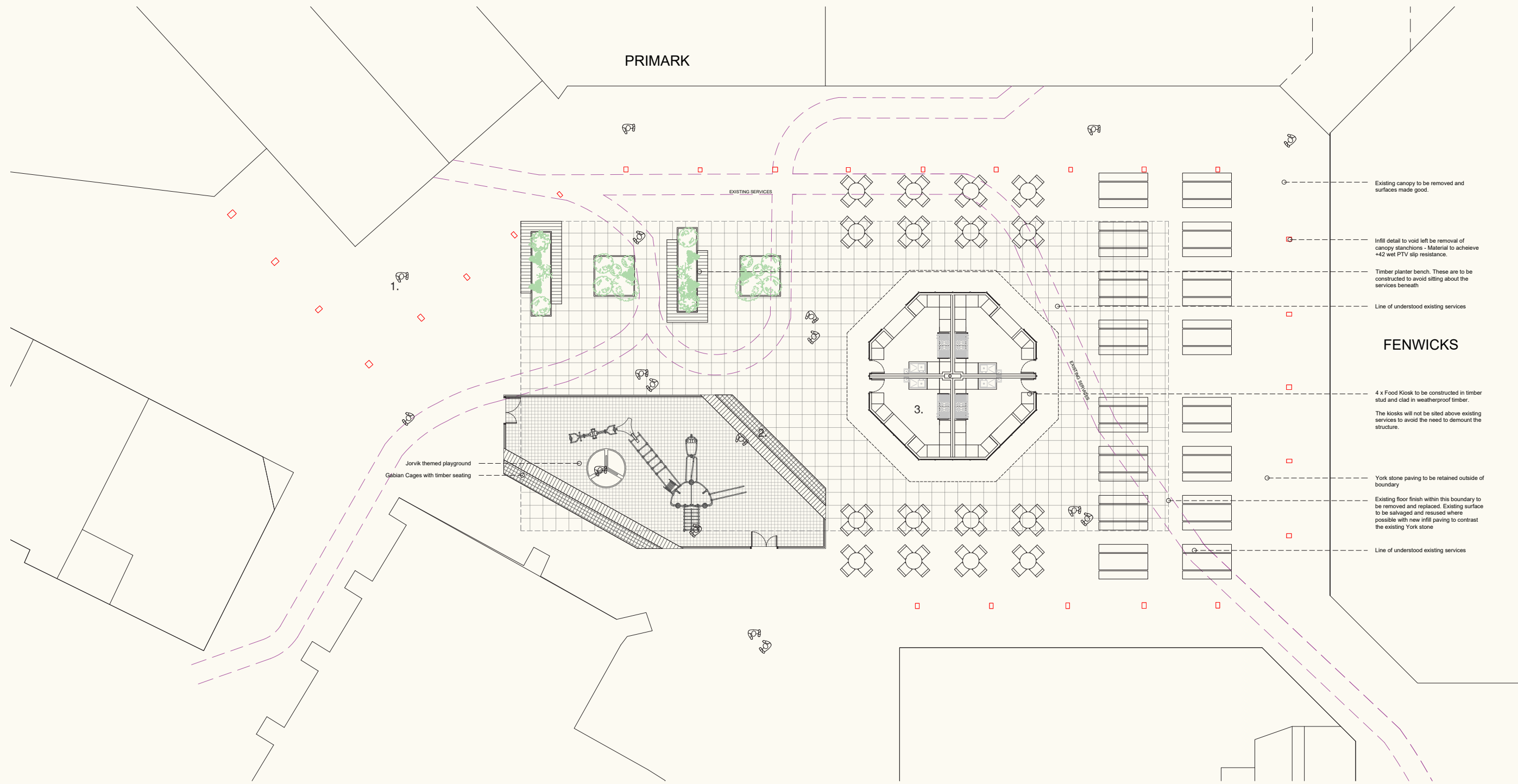


Appendix
Indicative Proposals
Coppergate Centre

SITE PLAN



- Existing canopy to be removed and surfaces made good.
- Infill detail to void left be removal of canopy stanchions - Material to achieve +42 wet PTV slip resistance.
- Timber planter bench. These are to be constructed to avoid sitting about the services beneath
- Line of understood existing services
- FENWICKS**
- 4 x Food Kiosk to be constructed in timber stud and clad in weatherproof timber. The kiosks will not be sited above existing services to avoid the need to demolish the structure.
- York stone paving to be retained outside of boundary
- Existing floor finish within this boundary to be removed and replaced. Existing surface to be salvaged and reused where possible with new infill paving to contrast the existing York stone
- Line of understood existing services

Phase 1

Removal of existing canopy and make good paving where necessary.

Phase 2

Removal of internal resin floor finish.

Phase 3

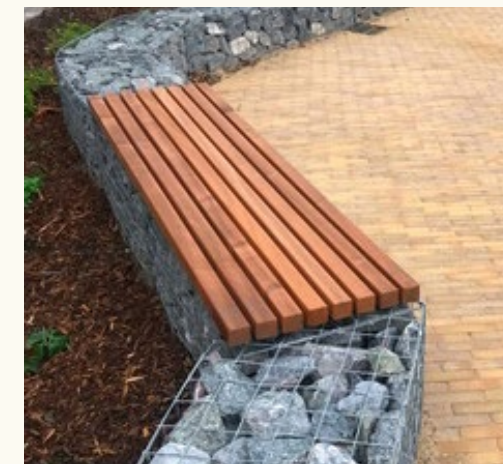
Install new floor finish and new insertions i.e. Kiosks, Playground, Planters, Furniture & Lighting

1.5

COPPERGATE CENTRE
PUBLIC REALM
YORK

JH.A

PRECEDENT IMAGES



PUBLIC SQUARE VISUAL

